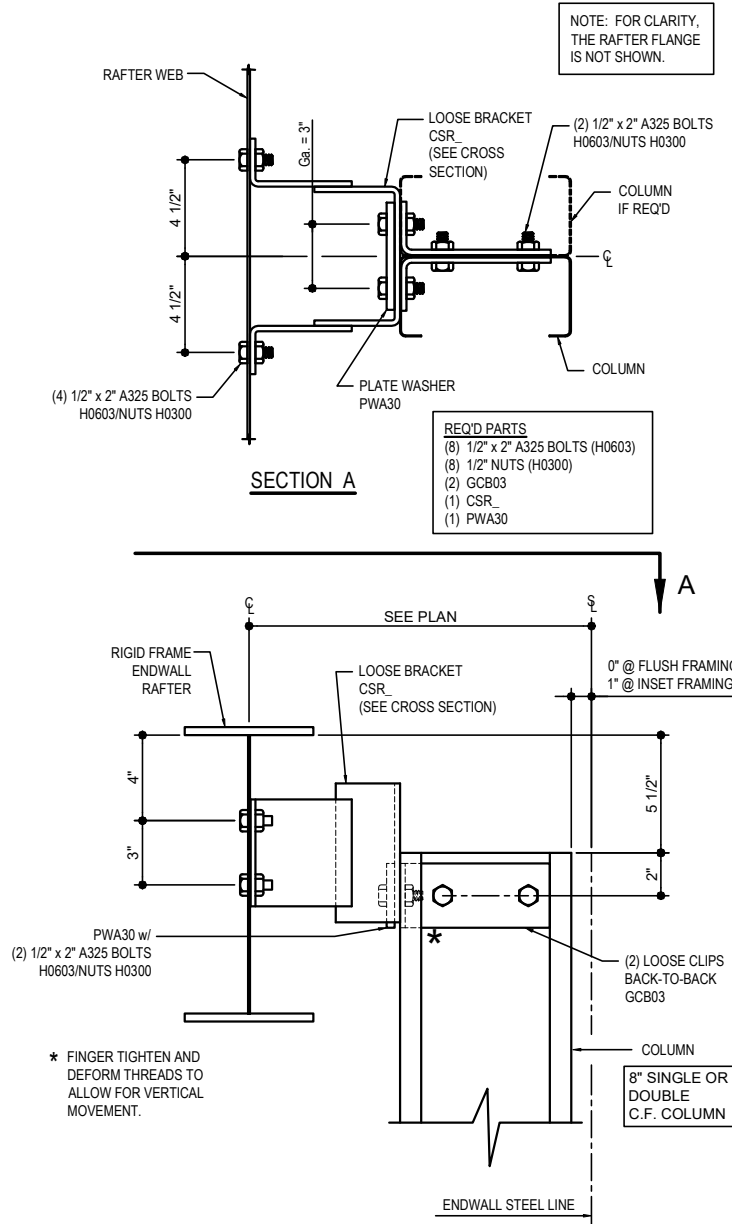


EXPANDABLE ENDWALL

- AD0010 - EW COLUMN TO EXP. EW RAFTER CONNECTION (8" C.F. COLUMN AT FLUSH/INSET GIRTS)
 - AD0070 - EW COLUMN TO EXP. EW RAFTER CONNECTION (BU/HR COLUMN AT FLUSH/INSET GIRTS)
 - AD0090 - EW COLUMN TO EXP. EW RAFTER CONNECTION (BU/HR COLUMN WITH COL EXT AT FLUSH/INSET GIRTS)
 - AD0091 - EW COLUMN TO EXP. EW RAFTER CONNECTION (BU/HR COLUMN WITH COL EXT AT FLUSH/INSET GIRTS)
 - AD0136 - EW COLUMN TO EXP. EW RAFTER CONNECTION (BU/HR COL AND BU/HR STUB INSIDE OF FRAME w/ SPACER)
 - AD0140 - EW COLUMN TO EXP. EW RAFTER CONNECTION (BU/HR COLUMN AND BU/HR STUB AT BYPASS GIRTS)
 - AD0141 - EW COLUMN TO EXP. EW RAFTER CONNECTION (BU/HR COLUMN AND BU/HR STUB AT BYPASS GIRTS)
 - AD0145 - EW COLUMN TO EXP. EW RAFTER CONNECTION (BU/HR COLUMN AND BU/HR STUB INSIDE OF FRAME)
-

AD0010 - EW COLUMN TO EXP. EW RAFTER CONNECTION (8" C.F. COLUMN AT FLUSH/INSET GIRTS)

[Download the DWG file by clicking here.](#)



ENDWALL COL TO EXP. EW RAFTER CONNECTION

8" COLD-FORMED COLUMN AT FLUSH/INSET GIRTS
REFERENCE ERECTOR NOTE FOR TYPICAL WASHER REQUIREMENTS

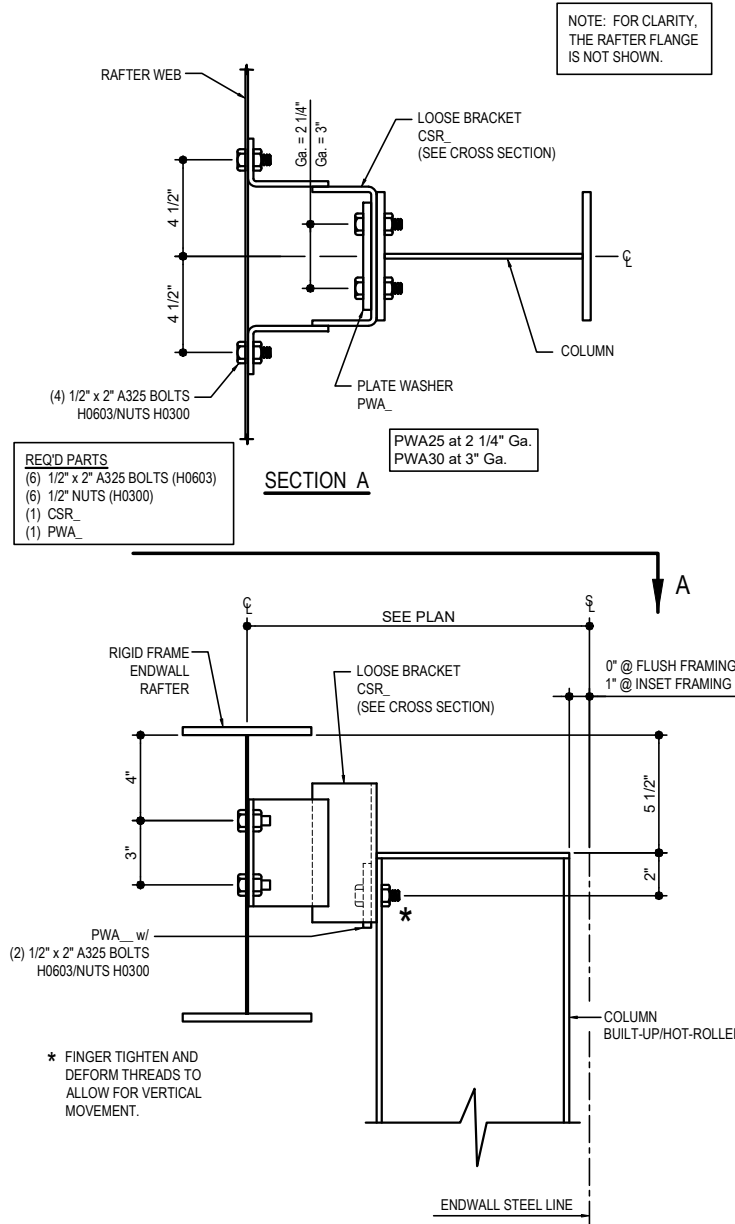
AD0010

Detailer Notes:

- 1) N/A

AD0070 - EW COLUMN TO EXP. EW RAFTER CONNECTION (BU/HR COLUMN AT FLUSH/INSET GIRTS)

[Download the DWG file by clicking here.](#)



ENDWALL COL TO EXP. EW RAFTER CONNECTION

BUILT-UP/HOT-ROLLED COLUMN AT FLUSH/INSET GIRTS
REFERENCE ERECTOR NOTE FOR TYPICAL WASHER REQUIREMENTS

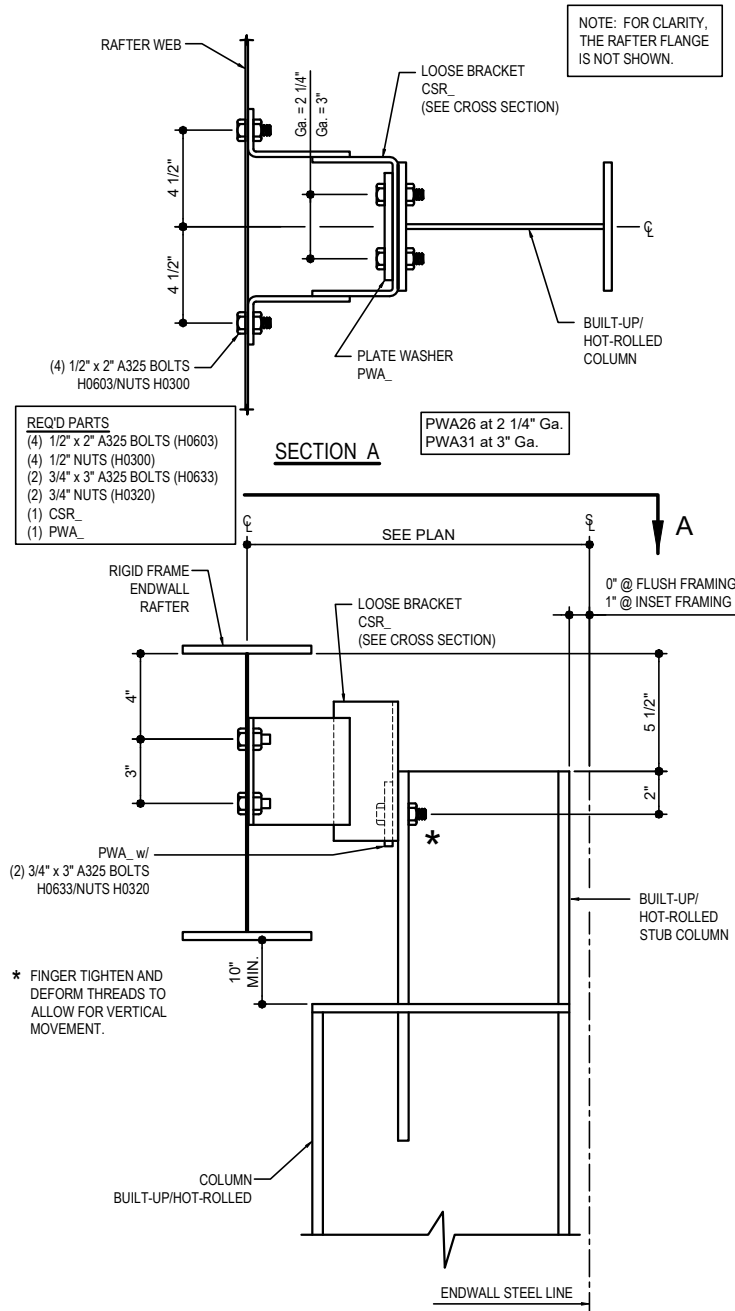
AD0070

Detailer Notes:

- 1) N/A

AD0090 - EW COLUMN TO EXP. EW RAFTER CONNECTION (BU/HR COLUMN WITH COL EXT AT FLUSH/INSET GIRTS)

[Download the DWG file by clicking here.](#)



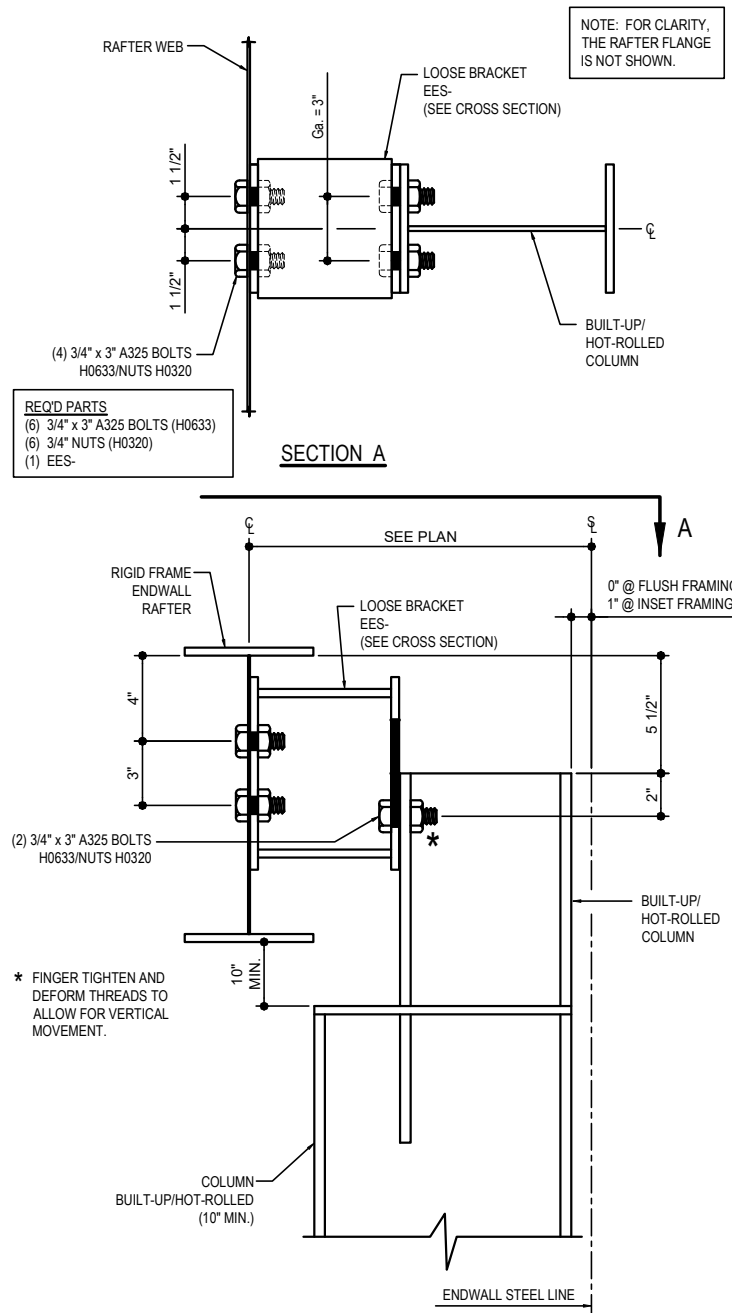
AD0090

Detailer Notes:

- 1) N/A

AD0091 - EW COLUMN TO EXP. EW RAFTER CONNECTION (BU/HR COLUMN WITH COL EXT AT FLUSH/INSET GIRTS)

[Download the DWG file by clicking here.](#)



ENDWALL COL TO EXP. EW RAFTER CONNECTION

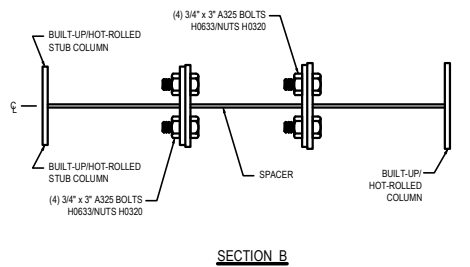
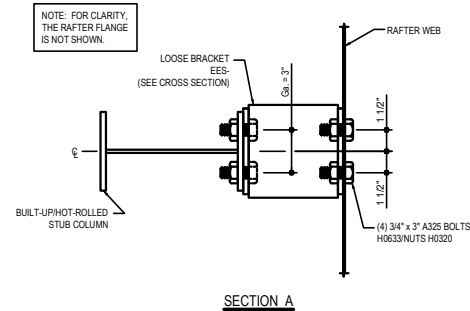
10" DEEP (MIN.) BU/HR COLUMN AND COLUMN EXTENSION AT FLUSH/INSET GIRTS
REFERENCE ERECTOR NOTE FOR TYPICAL WASHER REQUIREMENTS

AD0091

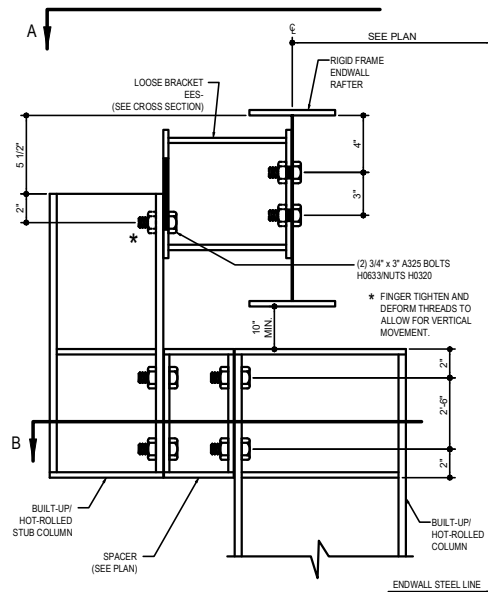
Detailer Notes:

- 1) N/A

AD0136 - EW COLUMN TO EXP. EW RAFTER CONNECTION (BU/HR COL AND BU/HR STUB INSIDE OF FRAME w/ SPACER)
[Download the DWG file by clicking here.](#)



- REQ'D PARTS**
- (14) 3/4" x 3" A325 BOLTS (H0633)
 - (14) 3/4" NUTS (H0320)
 - (1) EES-
 - (1) SPACER BRACKET



ENDWALL COL TO EXP. EW RAFTER CONNECTION

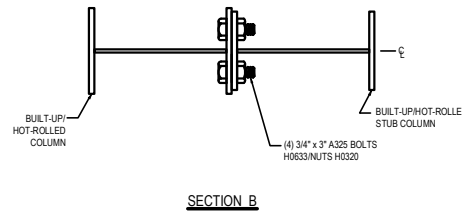
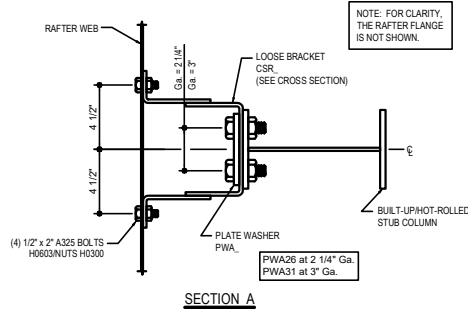
BUILT-UP/HOT-ROLLED COLUMN AND BU/HR STUB INSIDE OF FRAME w/ SPACER
 REFERENCE ERECTOR NOTE FOR TYPICAL WASHER REQUIREMENTS

AD0136

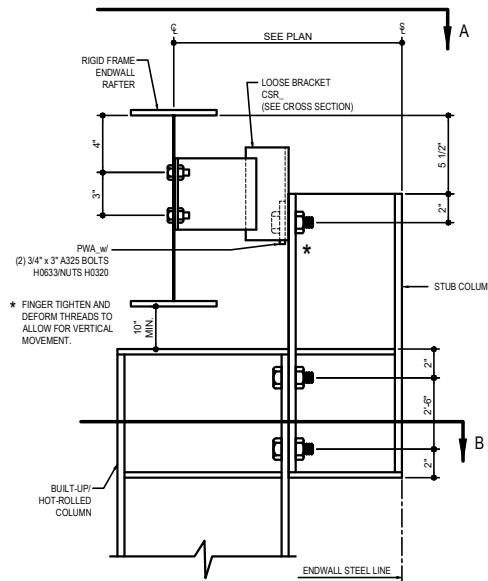
Detailer Notes:
 1) N/A

AD0140 - EW COLUMN TO EXP. EW RAFTER CONNECTION (BU/HR COLUMN AND BU/HR STUB AT BYPASS GIRTS)

[Download the DWG file by clicking here.](#)



- REQD PARTS**
- (4) 1/2" x 2" A325 BOLTS (H0603)
 - (4) 1/2" NUTS (H0300)
 - (6) 3/4" x 3" A325 BOLTS (H0633)
 - (6) 3/4" NUTS (H0320)
 - (1) CSR
 - (1) PWA



ENDWALL COL TO EXP. EW RAFTER CONNECTION

BUILT-UP/HOT-ROLLED COLUMN AND BU/HR STUB AT BYPASS GIRTS
REFERENCE ERECTOR NOTE FOR TYPICAL WASHER REQUIREMENTS

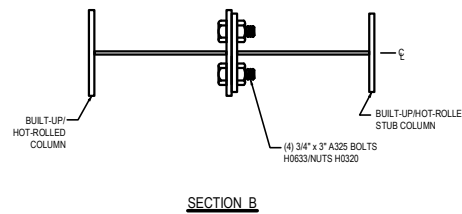
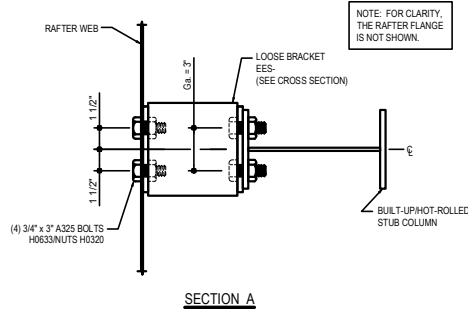
AD0140

Detailer Notes:

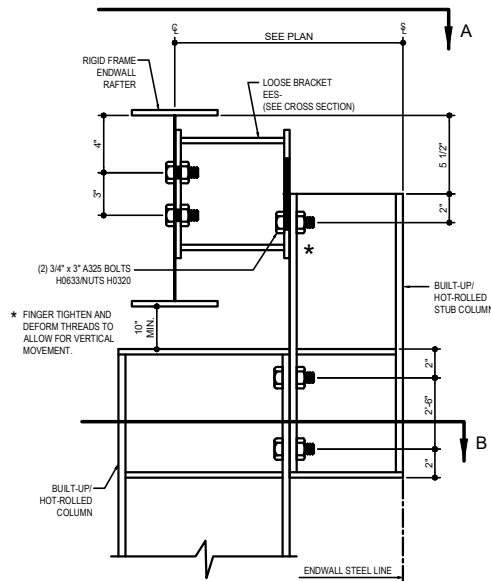
- 1) N/A

AD0141 - EW COLUMN TO EXP. EW RAFTER CONNECTION (BU/HR COLUMN AND BU/HR STUB AT BYPASS GIRTS)

[Download the DWG file by clicking here.](#)



REQD PARTS
(10) 3/4" x 3" A325 BOLTS (H0633)
(10) 3/4" NUTS (H0320)
(1) EES-



ENDWALL COL TO EXP. EW RAFTER CONNECTION

BUILT-UP/HOT-ROLLED COLUMN AND 8" BUILT-UP/HOT-ROLLED STUB AT BYPASS GIRTS
REFERENCE ERECTOR NOTE FOR TYPICAL WASHER REQUIREMENTS

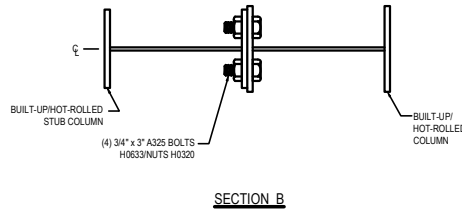
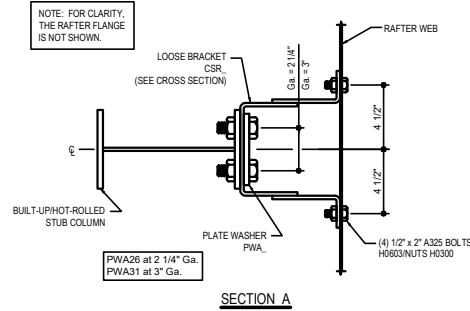
AD0141

Detailer Notes:

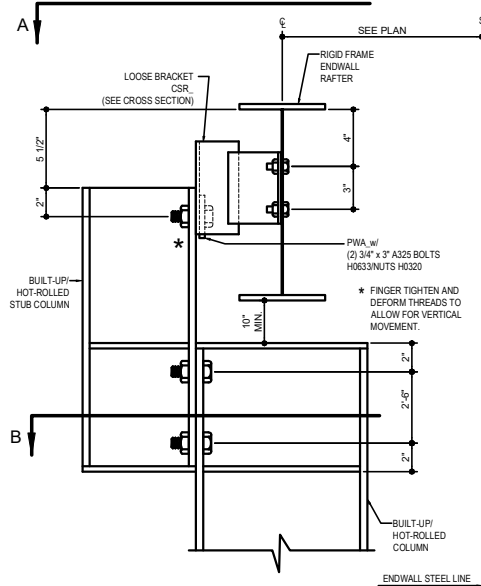
- 1) N/A

AD0145 - EW COLUMN TO EXP. EW RAFTER CONNECTION (BU/HR COLUMN AND BU/HR STUB INSIDE OF FRAME)

[Download the DWG file by clicking here.](#)



- REQD PARTS
- (4) 1/2" x 2" A325 BOLTS (H0603)
 - (4) 1/2" NUTS (H0300)
 - (6) 3/4" x 3" A325 BOLTS (H0633)
 - (6) 3/4" NUTS (H0320)
 - (1) CSR
 - (1) PWA



ENDWALL COL TO EXP. EW RAFTER CONNECTION

BUILT-UP/HOT-ROLLED COLUMN AND BU/HR STUB INSIDE OF FRAME
REFERENCE ERECTOR NOTE FOR TYPICAL WASHER REQUIREMENTS

AD0145

Detailer Notes:

- 1) N/A